

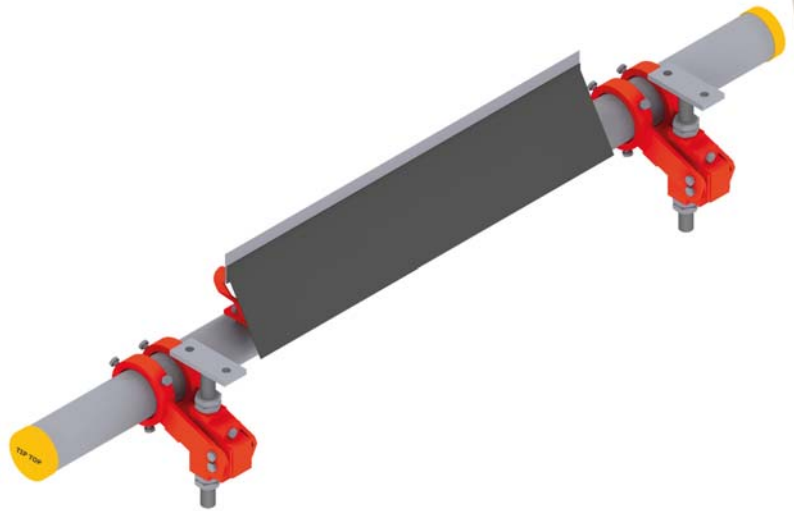


Industrie

REMACLEAN HM-U6

Belt cleaning system for return side application with elastically mounted carbide segments and a torsion tension unit with spindle adjustment.

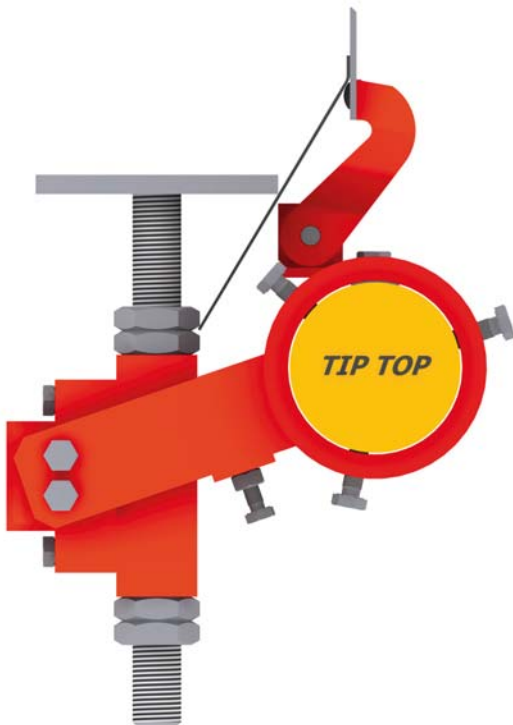
REMACLEAN HM-U6 is universally applicable for many types of materials. The individual elastically supported carbide segments achieve optimum cleaning efficiency while avoiding damage to the conveyor belt surface. The segments dynamically adjust to the belt surface and hence provide effective and belt-friendly cleaning. Plastic skirts prevent material build up on the elements. Contact pressure and directional alignment is achieved by the **torsion tension unit with spindle adjustment**.



REMACLEAN HM-U6

Advantages

- Belt friendly cleaning produced by the sagging function of the carbide segments
- Segments are individually supported and can adjust in the moving direction of the belt
- Precise adjustment of the necessary contact pressure is achieved by the torsion tension unit
- Superior tungsten carbide blades ensure long service life
- Compact design
- Carbide segments with material run-off skirts
- Individually supported (rubber spring elements) carbide segments
- For belt speeds up to 2.5 m/s



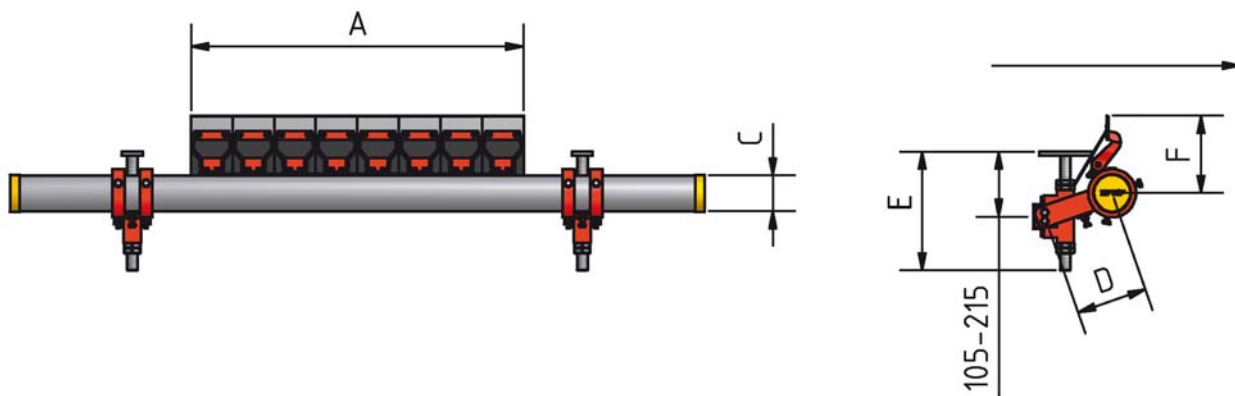
ONE BRAND – ONE SOURCE – ONE SYSTEM

REMACLEAN HM-U6

Technical data

Belt width (mm)	Cleaning width (mm)	Length of support tube (mm)	Diameter of support tube (mm)	Arm length (mm)	Shaft length (mm)	Height of carbide segments (mm)	HMT* L=120 mm (each)
	"A"	"B"	"C"	"D"	"E"	"F"	
500	480	1650	60	177	360	208	4
650	600	1800	60	177	360	208	5
800	720	180	60	177	360	208	6
1000	960	2000	60	177	360	208	8
1200	1080	2000	60	177	360	208	9
1400	1320	2500	76	268	425	216	11
1600	1560	2500	102	268	425	229	13
1800	1680	3000	102	268	425	229	14
2000	1920	3250	102	268	425	229	16

* HMT = Carbide segments



REMA TIP TOP GmbH
Business Unit Industrie

Gruber Strasse 63
Phone:
Fax:
www.rema-tiptop.com

85586 Poing/Germany
+49 8121 707-245
+49 8121 707-222
info@tiptop.de